



**Monthly Group Meeting**

**Tyler Area Meeting**

Monday, October 19, 6:30 p.m.  
Bridging The Gap, 12872 Hwy. 155 S.

**Jacksonville Meeting**

Tuesday, October 6, 6:30 p.m.  
Sam Smith's office, 1401 E. Rusk

**Lufkin Meeting**

Thursday, October 15, 6:30 p.m.  
Southside Baptist Church, 1615  
Tulane Drive

**Contact**

Phone: (903) 258-2547  
www.TylerTCF.org • info@TylerTCF.org  
P.O. Box 9714 • Tyler, TX 75711

Chapter Leader .....Tina Loper  
Chapter Leader.....Pat Settle  
Newsletter/Web Site .....Mary Lingle  
Steering Committee: Sam Smith,  
Carol Johnson, Carol Thompson,  
Patricia Miller, Charisse Smith, Mary  
Ann Girard, Cheri Zucca, Mary Lingle,  
David & Teresa Terrell

Joan & Bill Campbell, Regional  
Coordinators, (972) 935-0673  
TCF National: (877) 969-0010  
www.compassionatefriends.org

**The Meeting Agenda**

6:30 p.m. - Meeting will begin with refreshments followed by announcement of birthdays and anniversaries and reading of the Credo. We will then have open discussion.  
8:00 p.m. - Meeting will close by recognizing our childrens' names. Feel free to visit after the meeting or check out books from our library.

**In This Issue...**

Welcome .....	2
Love Gifts/Announcements .....	3
Birthdays .....	4
Anniversaries .....	5
Thank You Lord .....	5
Violent Loss .....	6
Grieving Parents Tribute to a Friend ....	7
Loss of an Infant .....	7
Poems .....	8

**Autumn Tears**

We look back on September and we realize that somehow we made it through those dreaded first days of school. Whether it was the anticipation or the actual days that were worst, we survived. We used our faith, our support systems or just plain hard work and made it over yet another hurdle. We watched small children for their first day of kindergarten, listened to excited teenagers talk of high school and heard stories of children leaving home to attend post-secondary school. Somehow we rode the waves of grief and found ourselves ashore again.

As these waves subside new ones will build as we head into the holidays that speak of, and to, children. Halloween will soon approach and for some, painful memories. Thanksgiving arrives to exemplify family and togetherness and Christmas looms ahead. These special days are forever reminders of our loss, the costumes we'll never sew, the empty chair at turkey dinner, the fun and magic we'll never share with someone we love. Forever reminders that our child has died.

To survive when these events and anniversary days come around let's find time to think of the good memories we have, the announcement of our long awaited pregnancy at Thanksgiving dinner, the look of excitement on our son's first Halloween night, the vision of our daughter helping prepare the turkey dinner. These holidays will always be reminders that our child died. Let us also make them reminders that our child lived! They left us memories more precious than any others to hold and celebrate!

*Penny Y. ~ TCF, Powell River, British Columbia*

**Halloween And Other Masks**

The month of October brings with it a smorgasbord for the senses. We can hear the crunching and crackling of leaves under our feet. We can see the brilliant reds, oranges, and yellows splash the earth. We can feel the magical approach of winter in the air. October is also for Halloween, a date synonymous with masks. As bereaved parents we have, at various times, worn many and varied masks. We have masked our feelings of despair, sorrow, and anguish for the sake of our loved one, friends, and acquaintances. We have masked our feelings of anger and bitterness for the traditional belief that a kind God would not do this to innocents. Most importantly, we have masked the person we have become, the person that has evolved after living through the death of a child. Let us celebrate the month of October by beginning to take off some of our masks! A very positive and helpful way to begin this process is to attend the next TCF meeting. Share your sorrow, your fears, your bitterness, and disappointment. Above all, share your progress and triumphs through the arduous journey of grief. When you enter a room of caring and supportive people who have shared your grief, there is no more reason to wear a mask.

*Cathy C., Erie, PA*

**The mission of The Compassionate Friends** is to assist families toward the positive resolution of grief following the death of a child of any age and to provide information to help others be supportive.



*We need not walk alone.*

"Grief is like a journey one must take on a winding mountainside, often seeing the same scenery many times, a road which eventually leads to somewhere we've never been before." —Gladys H.

## Welcome

We extend a warm welcome to those who attended their first TCF meeting last month.

We deeply regret the circumstances that brought you to our TCF Chapter. The Compassionate Friends is a mutual assistance, not-for-profit, self-help organization that offers support and understanding to families who have experienced the death of a child. You are cordially invited to attend our monthly meeting (held the third Monday of the month). The meeting is open to everyone and free of charge. You are free to talk, cry or to sit in silence; we respect the individuality of mourning. Comments shared in the meetings remain confidential.

Our chapter is operated entirely by volunteers dedicated to furthering the work of TCF. Your voluntary, tax deductible donations honor your loved one(s) in a meaningful way by enabling us to print and mail this newsletter and meet other expenses involved in reaching out to other grieving families (100% of funds are used for this outreach). Donations, along with the name of the person being honored, may be sent to:

The Compassionate Friends of Tyler  
P.O. Box 9714  
Tyler, Texas 75711

## To Our New Members

Coming to your first meeting is the hardest thing to do. But, you have nothing to lose and much to gain. Try not to judge your first meeting as to whether or not TCF will work for you. The second, third or fourth meeting might be the time you will find the right person—or just the right words spoken that will help you in your grief work.

## To Our Old Members

We need your encouragement and support. You are the string that ties our group together and the glue that makes it stick. Each meeting we have new parents. Think back—what would it have been like for you if there had not been any “oldies” to welcome you, share your grief and encourage you? It was from them you heard, “Your pain will not always be this bad; it really does get softer.”

## Cason Patrick Gimble

10-21 ~ 9-9



Precious son, loyal brother, dearest grandson, special nephew, fun-loving cousin, kind friend, these will forever be your names.

Child of God—this is your sweetest name of all!

“I thank my God upon every remembrance of you.”  
Philippians 1:3

*Your loving family ~ TCF, Tyler, TX*

**Please share your stories, poems or love messages for inclusion in our newsletter.**

**This month's printing of our newsletter sponsored by Jim & Linda Crawford**

**In honor & loving memory of  
Jared Sheets  
5-14 ~ 9-27  
grandson of  
Jim & Linda Crawford**



**Call (903) 258-2547 to sponsor a monthly newsletter.**



*We need not walk alone.*

“The greatness of a community is most accurately measured by the compassionate actions of its members, a heart of grace and a soul generated by love.”  
—Coretta Scott King

## Love Gifts



Claudette Brown in memory of Terry Wayne - donation towards the 10-25 event (see announcements)

Shalina Ramirez in memory of Bryce Cooksey

Dale & Phyllis Cavazos in memory of Chad

Tina Loper in memory of Christopher

Carol Johnson in memory of Jared Sheets

Betty Fiederlein in memory of Jeremiah Barker

Herbert & Sandy Parr in memory of Herbert Chris

Shane & Carol Johnson in memory of Jared Sheets

Jean Gimble in memory of Cason



## Special Thanks!

**Thanks to the following people who make a monthly contribution to TCF of Tyler:**

Claudette Brown in memory of Terry Wayne

Dale & Phyllis Cavazos in memory of Chad

Sam Smith in memory of Stacey - use of his office for the Jacksonville meeting

Bridging The Gap Ministries - Tyler meeting location

David & Teresa Terrell in memory of Andy - use of a storage building

**Thanks to Spring Creek Barbeque for donating funds for our Candle Lighting.**

**Thanks to Carol Thompson, Carol Johnson, Patricia Miller and Mary Delaney for helping with the newsletter assembly in August.**

## Newsletter Submissions

TCF Tyler welcomes all submissions to our newsletter. Send articles, poetry, love messages and scanned photos to: TCF Tyler, 5401 Hollytree Drive, 1204, Tyler, Texas 75703. Or e-mail text and photos to: info@TylerTCF.org

We reserve the right to edit for space and/or content. Deadline for submissions is the 5th of each month. TCF Chapters may copy articles from this publication provided credit is given to the author and the original source. Errors and Omissions: Please notify us if any of your information is incorrect.

## Announcements

**The Touched by Suicide** meeting is Tuesday, October 13, at 6:30 p.m. The meeting is held at the East Texas Center for Independent Living, located at 4713 Troup Hwy, Tyler, in the Highland shopping center. Anyone who has lost someone they love to suicide is welcome to attend this peer support group. Note that it is not the proper forum for those who have attempted suicide and survived. For more information please call 903-574-3127.

**Sam Smith and Scottie Garrison Performance:** Join us on Sunday, Oct. 25th from 6:00 p.m.-9:00 p.m. for music, dinner and fellowship at Currents Restaurant in Tyler, 1121 E. 2nd St. We will individually be responsible for the cost of our meals and family and friends are invited. Donations are appreciated. For directions, call (903) 597-3771 or visit [www.currentstyler.com](http://www.currentstyler.com) for a map.

**Jacksonville TCF Meeting:** The meeting in Jacksonville is held on the first Tuesday of the month, 6:30 p.m., at Sam Smith's office, 1401 E. Rusk, Jacksonville. For more information, please email [pdsettle@wmconnect.com](mailto:pdsettle@wmconnect.com) or [butterfly6@nctv.com](mailto:butterfly6@nctv.com), or call 903-258-2547.

**Lufkin TCF Meeting:** Join us at the Lufkin meeting held at 6:30 p.m. every 3rd Thursday of the month at Southside Baptist Church, 1615 Tulane Drive, Lufkin, TX 75901. For more information, contact Lauri Maner at 936-854-2002 or Sherri Tutt at 936-404-9517.

**Steering Committee:** If you are interested in participating in our chapter by serving on the steering committee, please plan to attend a steering committee meeting in 2009. These are the remaining dates we will be meeting: **Oct. 12** and **Nov. 2**. Call 903-258-2547 for more information.

**Join us on October 24, 2009** for the Out of the Darkness Walk to support Suicide Awareness and Prevention at Oak Point Park, Plano, TX. Starts: 11 a.m.; Ends: 2:30 p.m. Check-in Time: 10 a.m.-11 a.m. Registration Cutoff: 10/23/2009, 11:45 p.m.; Donation Cutoff: 12/31/2009 12 midnight.

**General Assembly:** Join us in October to assemble the newsletter and mail out cards. This is a nice time for fellowship while we help ourselves and others who have lost a child. Call 903-258-2547 for information.

**Canned Food Drive:** We will be collecting canned food for the Lack's Christmas Tree Food Drive to benefit the East Texas Food Bank. The tree will be decorated with TCF pictures, and the tree with the most food donated receives a donation from Lack's. Please donate Oct. 1 through Dec. 13.

**Annual Candle Lighting Ceremony Dec. 13:** The Ceremony will be held again at Crossroads Church on Hwy. 155 South. Please consider volunteering this year.





*We need not walk alone.*

“Bereavement is a darkness impenetrable to the imagination of the unbereaved.”  
—Iris Murdoch

### October Birthdays



**Cindy Dingler**  
10-18 ~ 9-6  
Daughter of Lynda Hanna



**Marshall Charles Donahue**  
10-18 ~ 5-18  
Son of Joyce Neely



**Joey Moore**  
10-30 ~ 10-4  
Son of Sarah Dolan



**Sandi McLain**  
10-20 ~ 8-9  
Granddaughter of  
Sandy White



**Jeremy Mark Lawler**  
10-25 ~ 4-19  
Son of Mark & Sue Lawler



**Brittany Butler**  
10-4 ~ 1-21  
Daughter of Shelly Butler



**James Brady Langston**  
10-13 ~ 2-15  
Son of Jamie Langston Dacus



**George Washington Shaw III**  
10-18 ~ 7-3  
Son of Bobbie Williams



**Austin Dixon**  
10-20 ~ 2-19  
Son of Don & Leslie Dixon



**Richard Heerdt**  
10-31 ~ 2-22  
Grandson of Lawrence Batte



**Mark Turner**  
10-3 ~ 6-19  
Son of Clayton & Pat Turner



**Suzie Gorman**  
10-9 ~ 1-14  
Spouse of Onie Gorman



**Rosa Linda Serrano**  
10-7 ~ 10-07  
Daughter of Sunee Savage



**Randy Rounsavall**  
10-14 ~ 6-19  
Son of Margaret Rounsavall



**Neil Defenbaugh**  
10-20 ~ 3-27  
Son of James & Dina Defenbaugh



**A.J. Langdon**  
10-16 ~ 11-14  
Son of Sue Langdon



**Clayton Norton**  
10-17 ~ 1-1  
Son of Ronnie & Dottie Norton




**Allison Carson**  
10-29 ~ 7-5  
Granddaughter of  
Phil & Ann Brown



**Cason Gimble**  
10-21 ~ 9-9  
Son of Lynn & Kalisa Gimble

This month's printing of our newsletter sponsored by Don & Leslie Dixon

In honor & loving  
memory of  
**Austin Dixon**  
10-20 ~ 2-19  
son of  
**Don & Leslie Dixon**





*We need not walk alone.*

"It is a curious thing in human experience, but to live through a period of stress and sorrow with another person creates a bond which nothing seems able to break." —Eleanor Roosevelt

### October Anniversaries



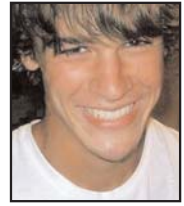
**Stacey Smith**  
9-8 ~ 10-4  
Daughter of Sam Smith



**John Patrick Carnahan**  
4-17 ~ 10-13  
Son of Rod & Shirley Carnahan



**Rosa Linda Serrano**  
10-7 ~ 10-07  
Daughter of Sunee Savage



**Chris O'Leary**  
6-25 ~ 10-26  
Son of Merri & Fred Walsh  
Son of Tom O'Leary



**Joey Moore**  
10-30 ~ 10-4  
Son of Sarah Dolan



**Kathy Robertson**  
4-23 ~ 10-23  
Daughter of Carolyn Love



**Jake Schoonover**  
9-15 ~ 10-29  
Nephew of Sue Howell



**Wade Goetze**  
11-29 ~ 10-28  
Son of Charlotte Nelson



**Sean Smith**  
2-2 ~ 10-27  
Son of Randy & Judy Smith

#### Notice about Newsletter Birthdays & Anniversaries

We are following the new guidelines from TCF National regarding the publishing of our children's birthdays and anniversaries. While we will leave the year intact on our printed copy, we will remove the year on the online copy. Thanks for your understanding while we comply for privacy reasons.



**Erica Smith**  
12-21 ~ 10-25  
Daughter of  
Todd & Sabrina Thoene



**Mikel Conway**  
11-17 ~ 10-11  
Son of Viola Conway  
Brother of Margie Newman



**Madeline Joy Kearney**  
7-15 ~ 10-6  
Daughter of  
Melody Kearney Burnett



**James Lee Lary**  
4-20 ~ 10-30  
Son of Elgin & Ann Lary

### Thank You Lord

Thank You Lord for this gorgeous little boy,  
Whose been nothing but a bundle of joy.  
I love him more than anyone knows,  
and will enjoy showing him how life goes.  
I've now watched him grow in every way,  
from "Pokemon" to "The Rock" to earning his own pay.  
And now his time is here,  
no more sorrow, pain or fear.  
I will miss him more than anyone will ever know,  
and will enjoy the wonderful memories  
that the Lord continues to bestow.  
Thank You Again Lord for this  
handsome young man, I give him to you now,  
he is all in your Hands!

*In Loving Memory of Christopher Alan Mize  
From Dad – Jeff Mize, July 27, 2008  
(The 1st paragraph was written when  
Christopher was a baby.)*





*We need not walk alone.*

“Love comforteth like sunshine after rain.” —*William Shakespeare*

---

## **Violent Loss: Losing a Child to Homicide or Suicide**

By Family Grief & Bereavement Examiner — Carol A. Ranney — Examiner.com

When a child dies a violent death such as homicide, survivors are left with not only their grief at the loss of their child, but with a heavy burden of legal proceedings and inner turmoil. Other bereaved parents are generally left to grieve in peace, but when there has been an act of violence, frequently the police and other investigators are involved, the public is alerted to what has happened, and the case may drag on for a year or more. Often there is a mandatory autopsy, the body and belongings are held for evidence, and there may be a long delay before the survivors can see the body and find closure through burial or cremation. The justice system may take over the situation and the survivors are often left out of the loop of information and denied the opportunity to participate.

Added to this is the reaction of not only the general public, but also friends and even family members. In an article in *The Atlantic Monthly* entitled "A Grief Like No Other" by Eric Schlosser, he says, "The fear of murder has grown so enormous in the United States that it leaves a taint, like the mark of Cain, on everyone murder touches. One might expect that the families of murder victims would be showered with sympathy and support, embraced by their communities. But in reality they are far more likely to feel isolated, fearful, and ashamed, overwhelmed by grief and guilt, angry at the criminal-justice system, and shunned by their old friends."

The reasons for this are only partially clear. Most bereaved parents (and siblings, grandparents, and others) have experienced the distancing of formerly close friends and relatives. No one mentions the deceased child, life goes on for everyone around them, and the bereaved family is left to mourn in an isolated bubble, alone. People are afraid of death. When someone dies at a young age, the truth is forced upon them that anyone can die, at any time, without warning. The subconscious reaction is often to make distance between themselves and survivors in an effort of self-protection.

People are also typically extremely uncomfortable by the pain of another. In addition, we all resist change, and the death of a child brings change into the heart of every relationship the survivors have. They themselves are irrevocably changed by the death of their child; over a long period of time, and through the tortuous process of grieving, the lives of every family member will be transformed, and they will emerge from the death and grief experience as different people. Many former friends and even relatives cannot accept this, and wait for the survivors to "get back to normal." They cannot accept that there is now, for them, a "new normal" that is permanent, and they may let the relationship go rather than adapt to what has happened.

When the death has been through homicide, these realities are greatly magnified. Survivors may feel shunned by their former friends, and very few may mention the loss and ask how the parents and siblings are doing, much less mention the source of death. Added to that are the parents' heightened feelings of guilt; it is natural, though not realistic, to go back in time and ask what they could have done differently—not let their child go out with certain friends, be home more, offer more advice, or different advice, not have moved, or chosen to have moved—the questions and the guilt can be endless. The reality is that parents have done the best they could, with what they knew, and the resources they had at the time.

If you have lost a child to homicide, or other violent death, seek help from those who truly understand your pain, isolation and sorrow. Parents of Murdered Children is a nationwide organization with many local chapters.

*Parents of Murdered Children*

*Lowell MA Chapter*

*Meets 2nd Tuesday of the Month*

*Saints Medical Center, Stackpole Street*

*For more information call: Arnie Muscovitz at 978-569-3501*





*We need not walk alone.*

"Faith is the bird that feels the light when the dawn is still dark."  
—Sir Rabindranath Tagore

---

## Grieving Parent's Tribute to a Friend

You walk with me, my friend, along my lonely path. Through a tiny thread of light, I see your kind face. My heart warms in your arms as my strength ebbs and flows. And without words, you know what is in my thoughts. When I am so distant and cold, you reach out with your love as I try so hard to be all I was in your eyes! As the winter comes and goes, there is a trickle of hope. My faithful friend, I hold your hand and my footsteps become lighter. You are always there. As the years pass, shall I learn to hide in the shadows? As I accept your love, a child with sparkling eyes with happy laughter and my pride, my joy, lives in my heart. For all of my life I shall remember the precious love I knew. To lose the young is to break hearts. When the tears begin to fall, my angel, my friend, comforts me. As I walk slowly, friend, you cast the light of hope and understand my heart. Some will forget my child and I know this has to be. I may learn to smile again but just for one like you. My friend for life, I do not know the way; lead and I will follow as I learn to live again. Your footsteps are blessed for I will not forget that you were sent to me. My tears of gentle sorrow are understood by few. The love and compassion that comforts me warms like the sun; the golden light, the ray of hope — for I am not alone. May God Bless You, Friend.

*Maureen S. ~ TCF, Victoria, Australia*

## Loss of an Infant (The Grief of a Parent Who Has Lost an Infant)

To experience the loss of an infant is to grieve for what never was. After all the months of anticipation and preparation, the actual birth of a child brings the feeling of hope and fulfillment. Should that child be stillborn, or die hours, days or even months later, the unrealized dreams become a source of pain for the parents. No parent expects to outlive his child; the death of an infant is often the loss of a child unknown even to the parents. The expected stages of grief (guilt, disbelief, anger, etc.) can have new directions for the parents who have lost an infant.

1. Shame and guilt. Especially if the infant was stillborn or had a birth defect, the mother may feel she has failed as a woman. "Other women have live, normal babies, why can't I?" Should an infant die months after birth, parents find it hard to resolve feelings that it was their fault.
2. No memories. Parents may only have "souvenirs of an occasion" (birth certificate, ID bracelet) by which to remember their child. If the infant is older, they may have pictures and a few belongings, but they still feel they hadn't really gotten to know their child.
3. Loneliness in grief. It is hard for friends and relatives to share your grief for a child they never knew. If the child is a newborn they may give the impression that you are grieving unnecessarily over a non-person. They hope that you can "forget this baby" and "have another one."
4. Neglected father. Too often the sympathies of professionals and friends are directed mainly to the mother. It is important to remember that the father had made plans for this baby too.
5. Mothers vs. fathers. Since the mother has bonded with her child all during pregnancy, her grief may be much deeper than the father who only came to know this child after birth. It may be difficult for a father to understand why his wife's grief is so profound and so prolonged.

*By Claire M. & Sue S. ~ TCF, St. Louis, MO*





*We need not walk alone.*

"Do not be daunted by the enormity of the world's grief. Do justly, now. Love mercy, now. Walk humbly, now. You are not obligated to complete the work, but neither are you free to abandon it." —*The Talmud*

## To Jonathan

I questioned the loss of a loved one  
The grave seemed so final and cold  
But we will meet again where death has no victory,  
In a land where we will never grow old.

I never met one man without sorrow  
Never looked into eyes without pain  
I know a land where grief is a total stranger  
and songs of joy are the only songs that are sung.

Tears will never stain the streets of that city  
No griefs of death on my mansions door,  
Tear drops aren't welcome beyond the gates of glory  
for the heart will never break anymore.

To my son, Jonathan Sanders, who will always be in my heart. The memories of you are with me every breath I take.

*I love you,  
Mom, Dad & Lindsey ~ TCF, Jacksonville, TX*

## People Think

People think we're fine, you know. They  
Say, "Oh, siblings heal so fast." But  
they don't know the empty feelings of  
our longing for the past.

People think we're fine, you know.  
"Look how they've resumed their lives,"  
they say. But they don't know of our  
troubled heart or the loneliness from day to day.

People think we're fine, you know. "See  
how they're getting over it?" they  
surmise. But, they don't know that  
we've learned to laugh and smile only to  
complete our broken heart's disguise.

*Mary M. ~ TCF, Ft. Lauderdale, FL*

## To My Son

by Judy Tuthill, TCF

Little boy, whose heart beat I heard,  
And whose kick I waited but never felt.  
I'm sorry, so sorry

You never felt my love, my arms,  
How much I wanted you.  
Forever will I hold you in my heart  
Oh dear one, you weren't ready to come  
Too small to live.

If only more life could I have given you.  
Dear baby, my little one,  
I cry for you.

## Compassionate Friend

What is a Compassionate Friend?

One who softens the journey of grief  
One who stands beside me

One who gives a gentle and safe hug  
A look of understanding

One who shows me how to live, laugh, and love again  
Validates the loss of my child  
Accepts me for who I am

Honors the life my child lived  
Remembers my child  
Allows me to share memories of my child  
Acknowledges and confirms my feelings are real

Most importantly the friendship, love, support, and care  
given through the darkest times a parent experiences  
through the loss of a child

I am grateful for my family, friends, and especially my  
compassionate friends who endure the same journey and  
truly understand the loss of a child

My hope is that each and every one of you find some  
comfort and peace on your journey and know we are  
here to walk with you and support you

In Memory of Stacy and Appreciation of  
my Compassionate Friends

Sadly missed, forever loved, and never forgotten...

*Susan S. ~ TCF, Manchester/Nashua, NH*

## Reflections of an Anniversary

Frozen in a hundred photographs, my son,  
No more do you crash through the door  
And throw your adventures at my feet  
Or solve the non-workings of a music box.  
Your rolling giggle echoes in your sister's voice;  
Your dimple somehow lodges on your brother's face  
And younger brother lives with your scientific thirst.

We said good-bye years ago  
But you never left.  
Memories, a thousand moonbeams of joy,  
Not frozen, but active  
A spirit filling in the corners and hollows of my life  
A love expanding my capacity for living  
Until in eternity—we meld again.

*Marcia A. ~ TCF, Mercer Area Chapter, NJ*



# The Compassionate Friends of Tyler

P.O. Box 9714  
Tyler, TX 75711

We are happy to send our newsletter to you. We hope that it is helpful to you to be kept informed of chapter resources and activities and that you still wish to receive our newsletters that contain excellent material relating to grief issues.

To keep our mailing list current, we do ask to hear from you each year making sure that our information is correct and that you still wish to receive our mailings. If we did not hear from you in the last year please indicate any appropriate choices below and return the form to the address at the bottom of this page.

Your Name: \_\_\_\_\_

Child's Name: \_\_\_\_\_ Relationship: \_\_\_\_\_

Birth Date: \_\_\_\_\_ Death Date: \_\_\_\_\_ Cause of Death: \_\_\_\_\_

Address: \_\_\_\_\_

City: \_\_\_\_\_ State: \_\_\_\_\_ Zip: \_\_\_\_\_

Home Telephone: \_\_\_\_\_

E-mail: \_\_\_\_\_

Please check any of following that apply.

Please continue sending the newsletter.

No thank you, I'd prefer to stop receiving the newsletter. (Newsletters are posted monthly on our Web site.)

Please include my child's name and picture in the slide presentation at the Candle Lighting Ceremony.

Please include my child's picture and information on the TCF Tyler Web site. ([www.TylerTCF.org](http://www.TylerTCF.org))

I am enclosing a memorial to support The Compassionate Friends in the amount of \_\_\_\_\_  
Please make check payable to TCF

In memory of \_\_\_\_\_

## Please use this gift for:

TCF Newsletter  Butterfly Release  Candle Lighting  TCF Events  Other \_\_\_\_\_

The continuation of this chapter's work depends on donations. If you have not taken the opportunity to give a donation in memory of your child please consider taking this time to give a gift that will help reach out to other newly bereaved parents.

We must have your written permission on file to use your child's name and/or picture in the newsletter, Web site, Candle Lighting Ceremony or any other TCF event. Permission may be withdrawn at any time by written request. This information is used to maintain our Chapter Database. It is confidential and is only utilized for Chapter activities such as the newsletter.

\_\_\_\_\_  
(Signature) Date: \_\_\_\_\_

Please return completed form to: The Compassionate Friends of Tyler, P.O. Box 9714, Tyler, TX 75711



**"I don't think you ever stop giving. I really don't. I think it's an on-going process. And it's not just about being able to write a check. It's being able to touch somebody's life." —Oprah Winfrey**



# THE COMPASSIONATE FRIENDS

P.O. Box 9714  
Tyler, Texas 75711



*We need not walk alone.*



[www.TylerTCF.org](http://www.TylerTCF.org)